

# Church Street

Amherst, NS

March 27, 2024

Stephanie Mah Trottier B.Sc, MES, LPP  
Director of Design & Sustainability  
Clayton Developments  
[E: smah@claytondev.com](mailto:smah@claytondev.com)  
C: 902 471 9592



# Pocket Communities



New Glasgow, NS  
Under Construction



Halifax,  
NS

Traditional  
pocket style  
development

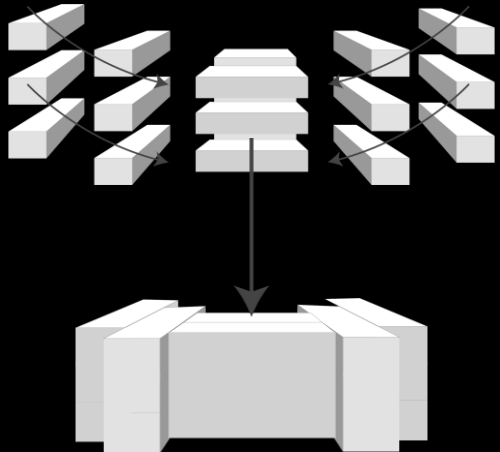
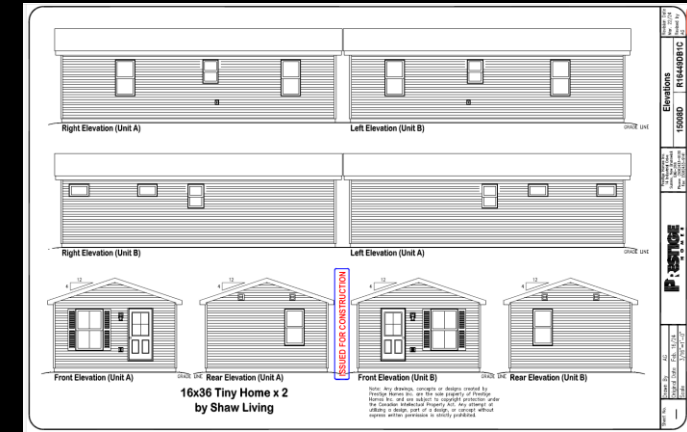
# Pocket Communities



- Walkways → • Increased interactions with neighbours
- Grouped Parking → • Easy to engage in active/social outdoor activities
- Communal Green Space → • Community oriented focus
- Homes Face Inward → • Increased sense of security
- Front Porches → • Enables low effort social interactions
- Small Building Footprints → • Encourages use of communal space

# Cost Reduction

- Standardized Construction
  - Hybrid homes
  - 8 – 10 weeks
  - SOPs
- Modular Innovation
  - 8 – 10 business days
  - Diverse products
- Reduced Infrastructure





Thank You!