

Church Street

Amherst, NS

March 27, 2024

Stephanie Mah Trottier B.Sc, MES, LPP
Director of Design & Sustainability
Clayton Developments
[E: smah@claytondev.com](mailto:smah@claytondev.com)
C: 902 471 9592



Pocket Communities



New Glasgow, NS
Under Construction



Halifax,
NS

Traditional
pocket style
development

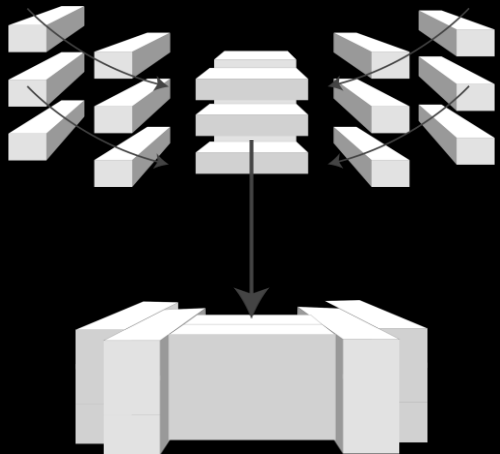
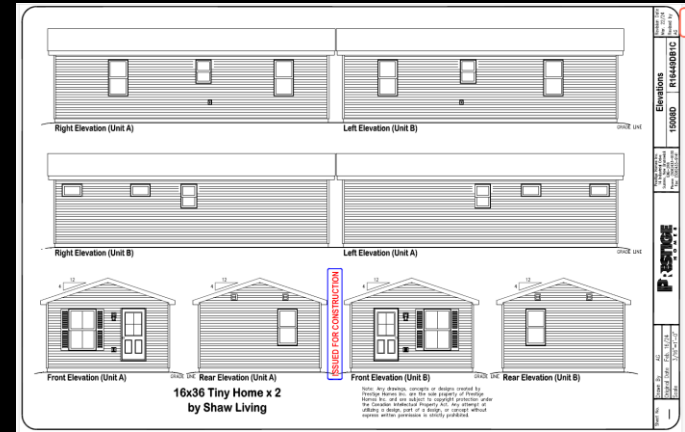
Pocket Communities



- Walkways → • Increased interactions with neighbours
- Grouped Parking → • Easy to engage in active/social outdoor activities
- Communal Green Space → • Community oriented focus
- Homes Face Inward → • Increased sense of security
- Front Porches → • Enables low effort social interactions
- Small Building Footprints → • Encourages use of communal space

Cost Reduction

- Standardized Construction
 - Hybrid homes
 - 8 – 10 weeks
 - SOPs
- Modular Innovation
 - 8 – 10 business days
 - Diverse products
- Reduced Infrastructure





Thank You!